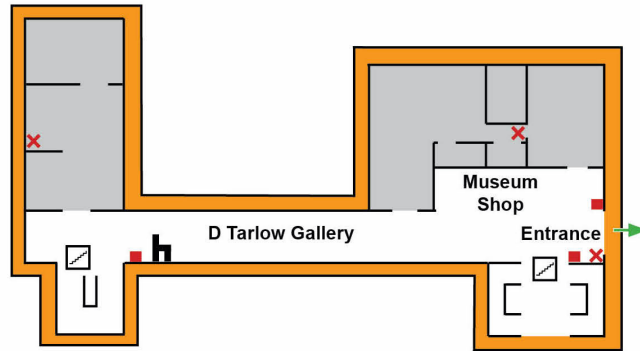
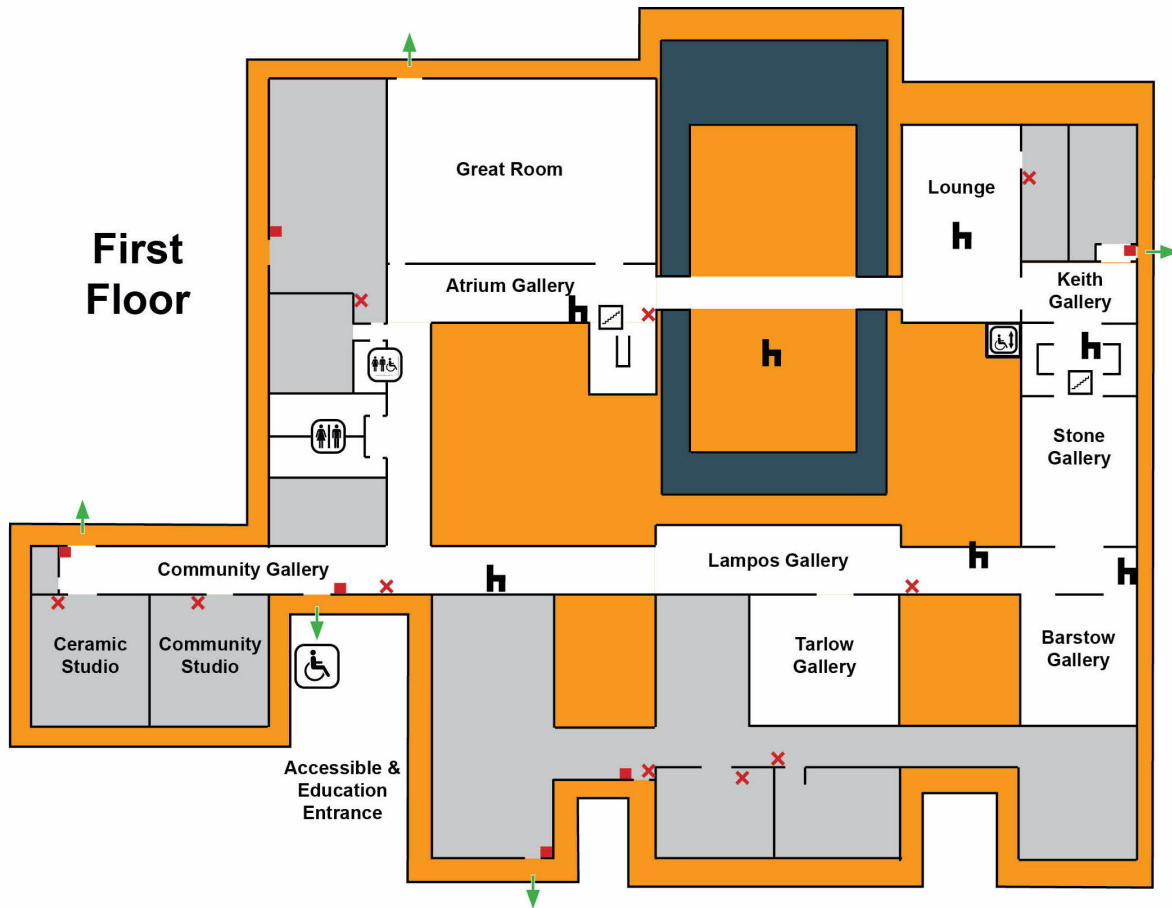


Second
Floor



First
Floor



Fuller Craft wants to keep you and the artwork safe, and to make sure everyone enjoys their visit.


Contemporary craft is amazing but fragile – *please do not touch the artwork unless signage invites you to do so.*

Lighten your load - *check your large bags and backpacks at the front desk. This helps prevent accidental damage to art.*

Be refreshed - *enjoy food and drink on the patio or the lounge, and not in galleries.*

Mark the moment - *non-flash, personal photography welcome, including TikTok's and selfies! #fullercraft*

Stay together - *children under 12 should be accompanied by an adult.*

-  **Restrooms**
-  **Everyone Restroom**
-  **Stairs**
-  **Lift**
-  **Seating**
-  **Fire Alarm**
-  **Fire Extinguisher**
-  **Emergency Exit**

